

Energistyring og Sustainability trends

Thomas Schroeder

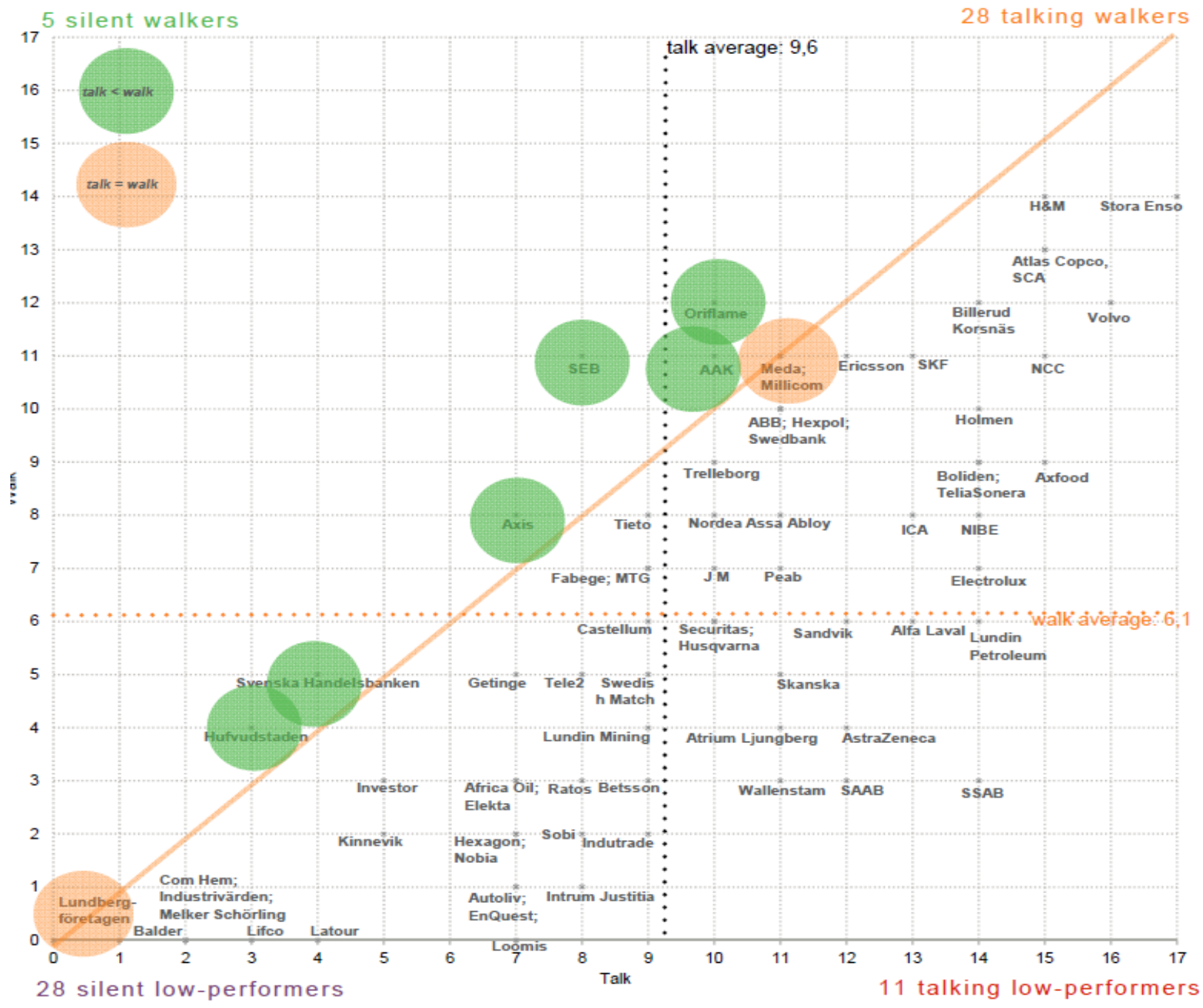
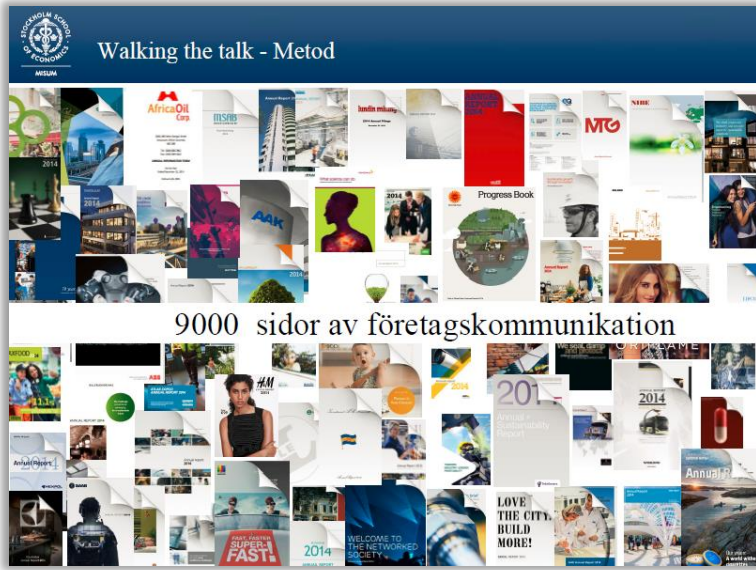
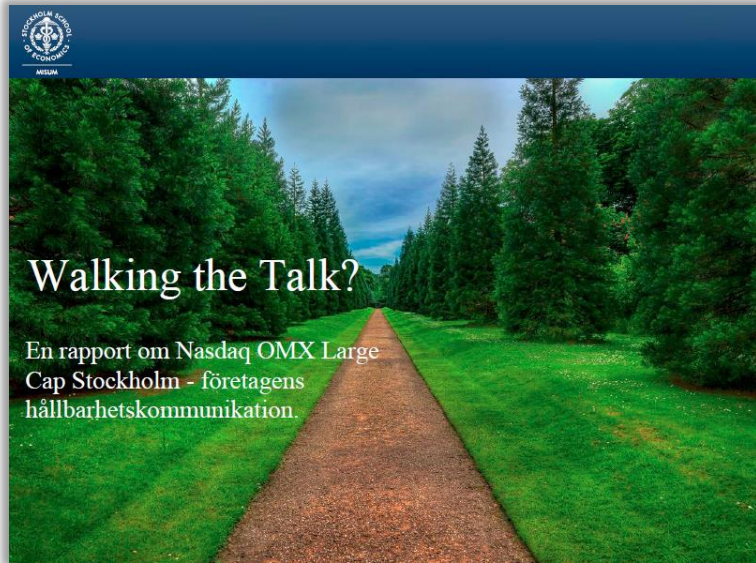
International Consultancy Manager

Energy & Sustainability Services, Schneider Electric

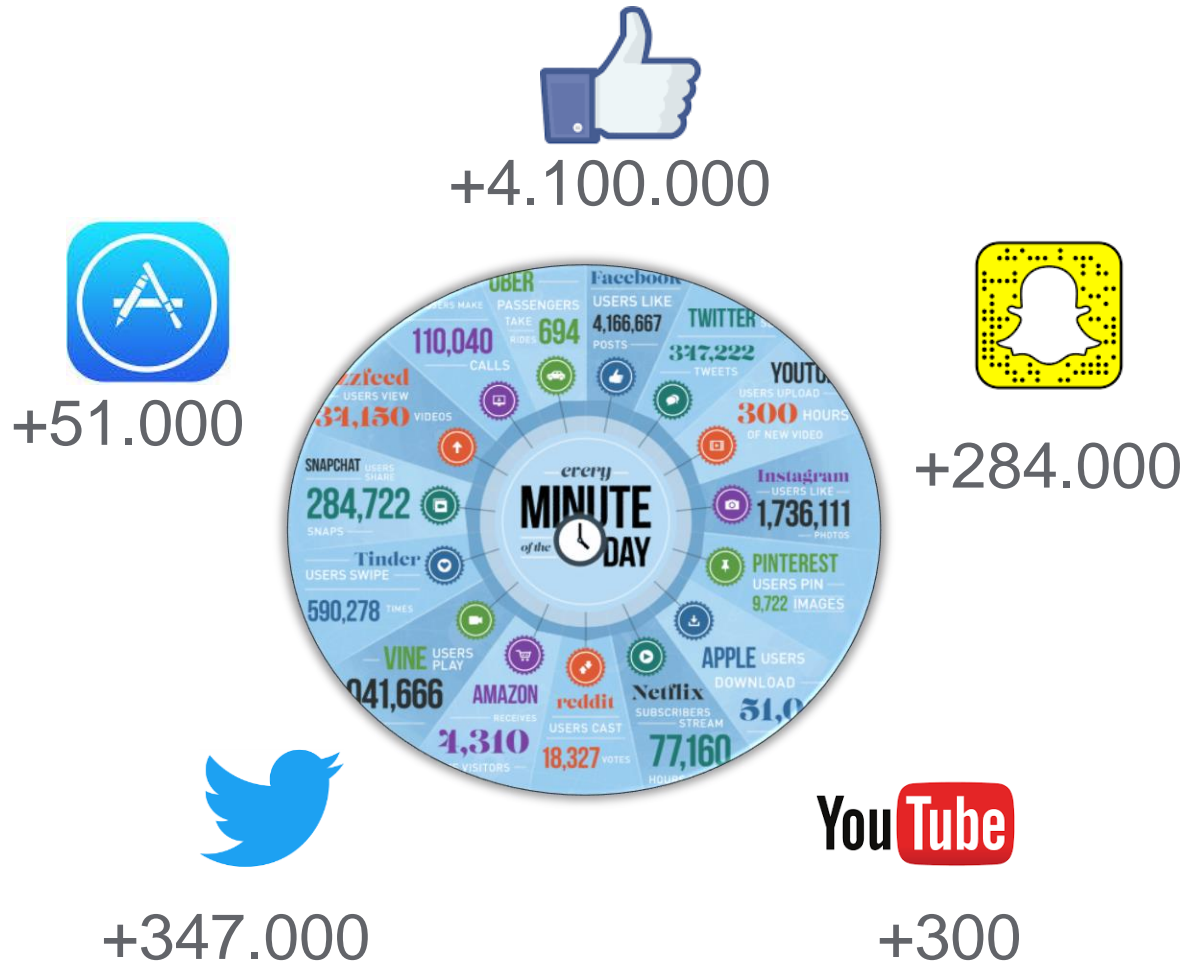
Sustainability trends...



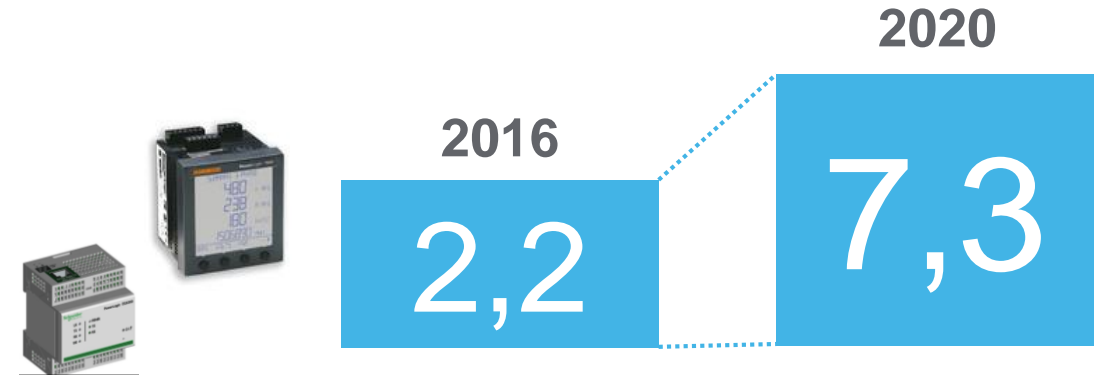
“Walk the Talk”



Every day, we create 2.5 quintillion bytes of data...



Units Installed Base in Industry
(Billion of units)

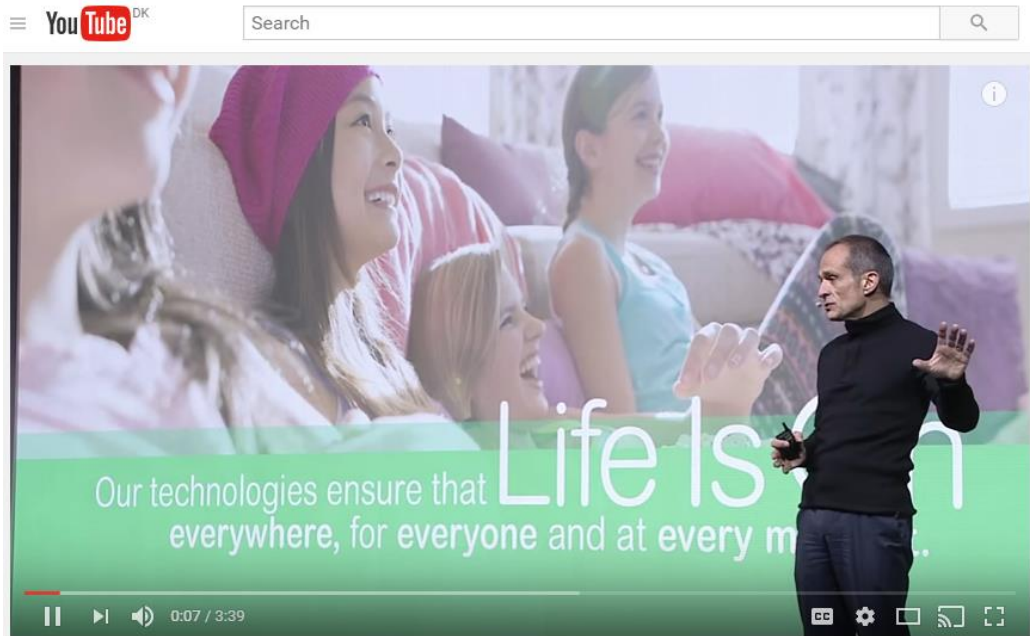


Digital investment in Industry
(Billion of dollars)



A word from our sponsor – Jean Pascal Tricoire

Innovation Summit 2016 Keynote Highlights



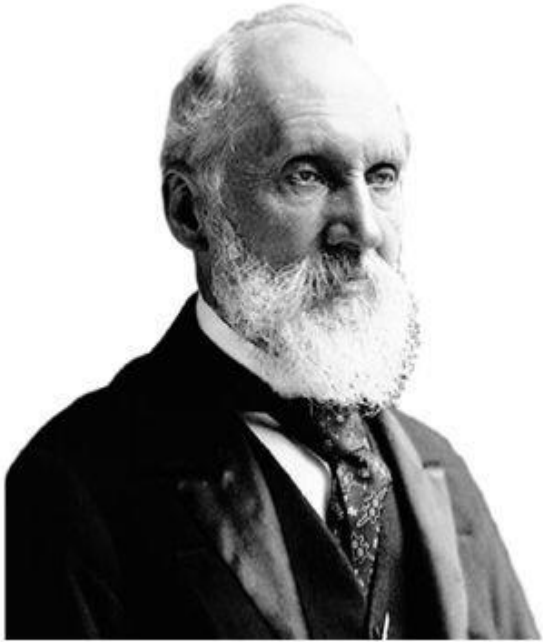
https://youtu.be/4Jm1qQ_SE4k

World Economic Forum 2017 in Davos



<http://video.cnbc.com/gallery/?video=3000348498>

Bring you data into perspective and...



To measure
is to know.

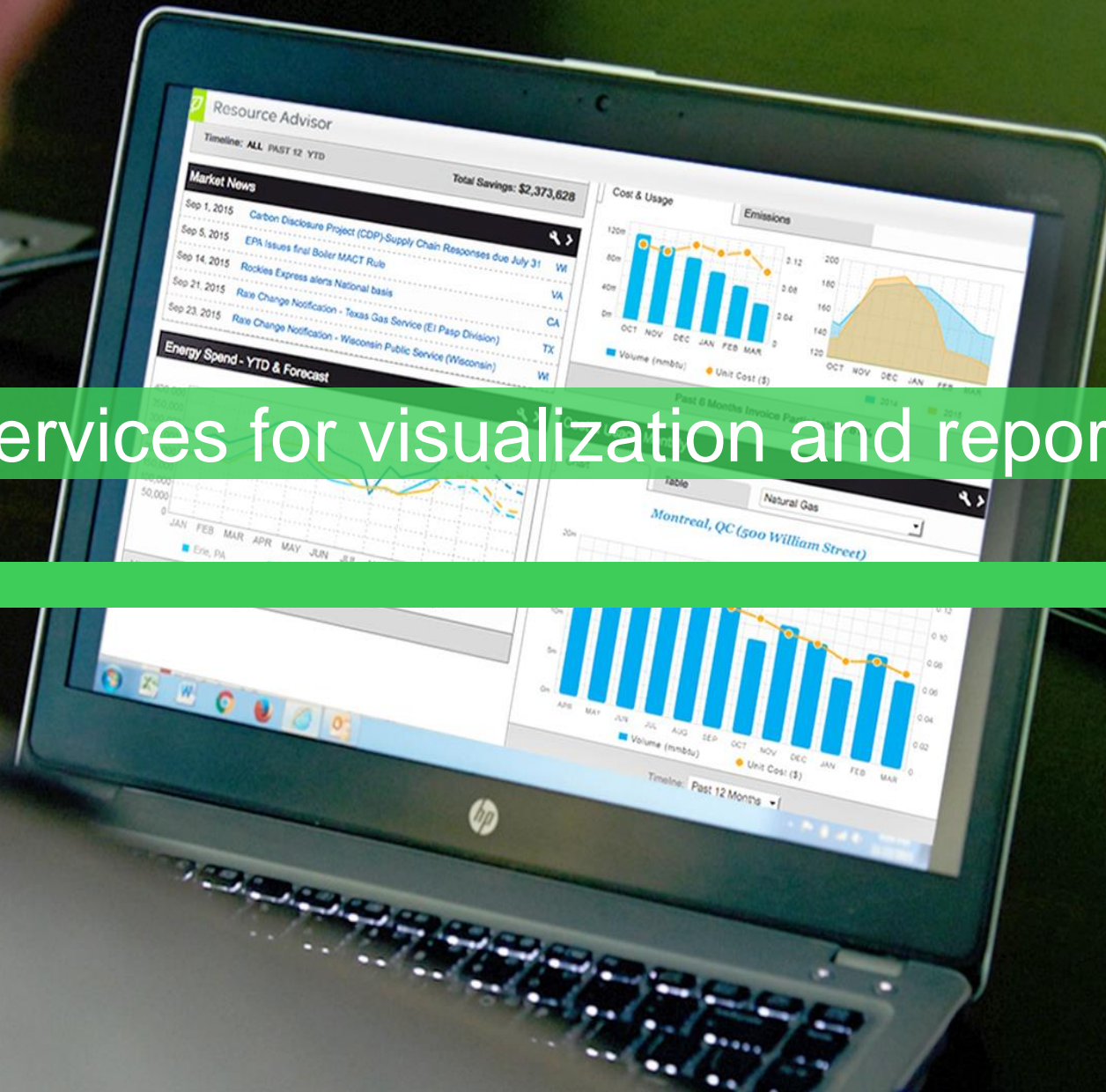
- Lord Kelvin



**“You should measure
things you care
about. If you’re not
measuring, you
don’t care and you
don’t know.”**

– STEVE HOWARD

Platform and services for visualization and reporting



Connecting your energy data to your core business!



Decision makers are interested in two fundamental things

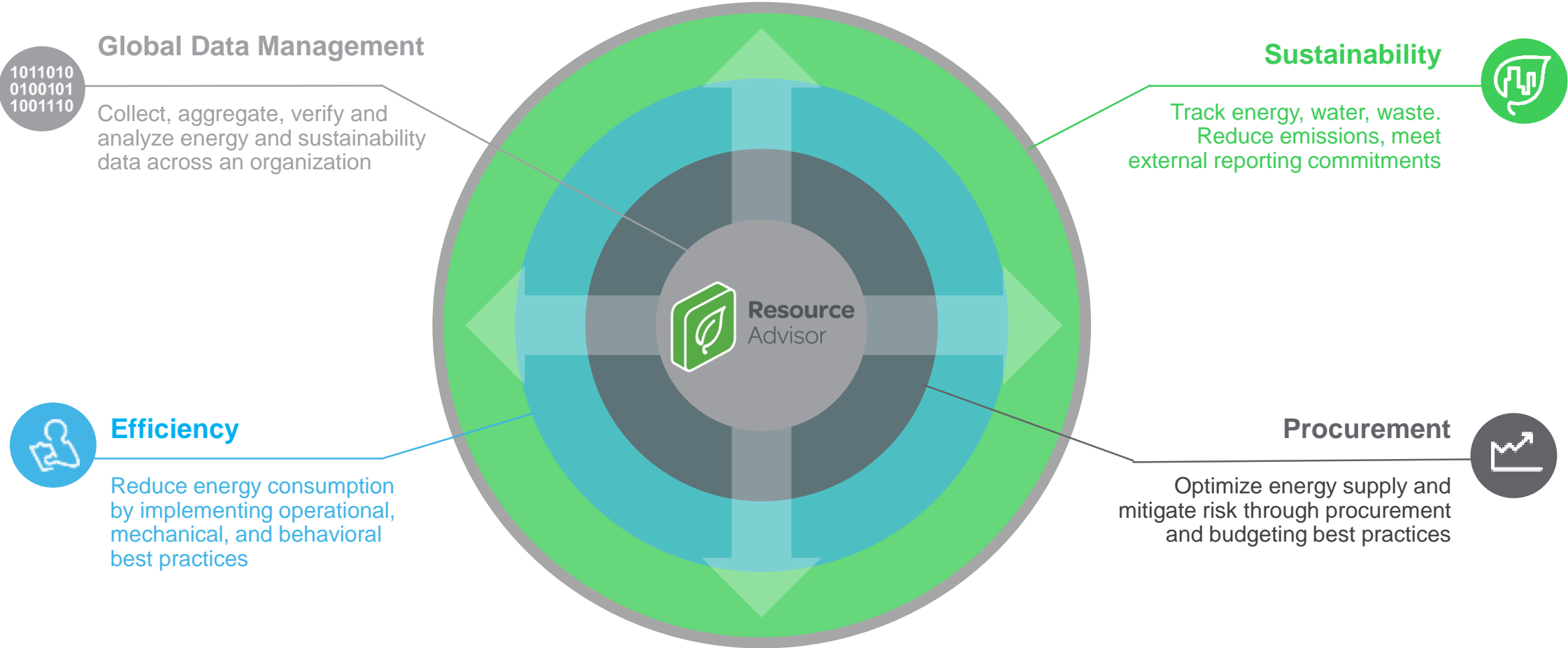
- › Knowing what is likely to happen in the future (prediction)
- › Making the best decision right now (optimization)

We specialize in software solutions for planning, scheduling, optimization and predictive modeling, which address these two fundamental needs.



https://youtu.be/3eF8_d93qMs

Centralized Data & Analysis Across The Energy & Sustainability Landscape



Identify & Track Energy Efficiency Opportunities

Global data management
Procurement
Efficiency
Sustainability

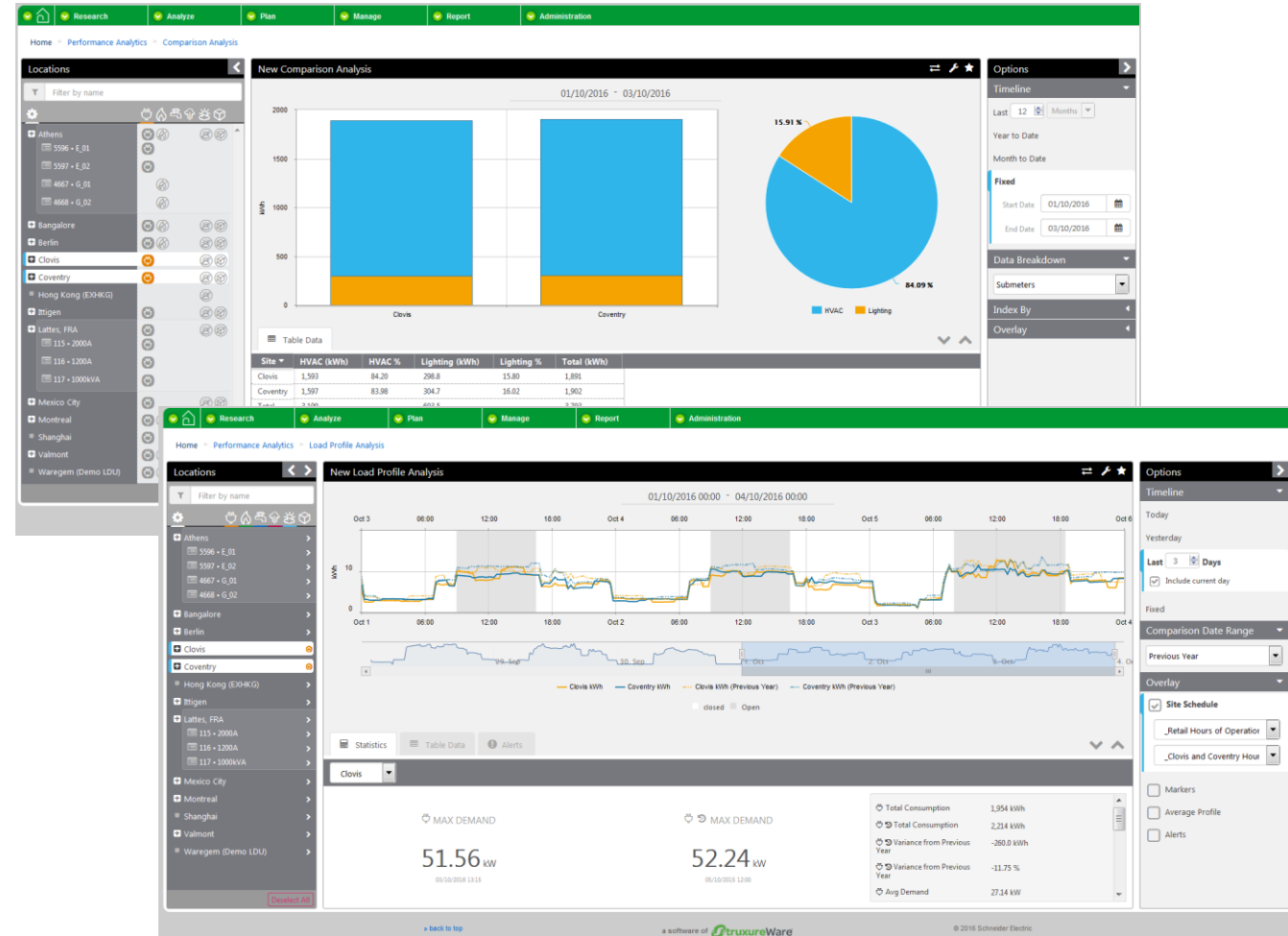
Put energy data to work, track energy performance

You need:

- Robust **energy monitoring** and targeting tool
- Compare and benchmark **performance**
- **Identify** and act upon energy efficiency opportunities

Resource Advisor allows you to:

- **Manage** interval data relating to your entire WAGES consumption
- **Compare** and benchmark facilities using raw or normalized data to identify opportunities
- Set **alarms** to issues or performance drift
- Configure **baselines** to track performance against target
- Centrally **plan and manage** the progress of energy efficiency projects across your portfolio



One Source Of Truth For Streamlined Performance Reporting

Global data management
Procurement
Efficiency
Sustainability

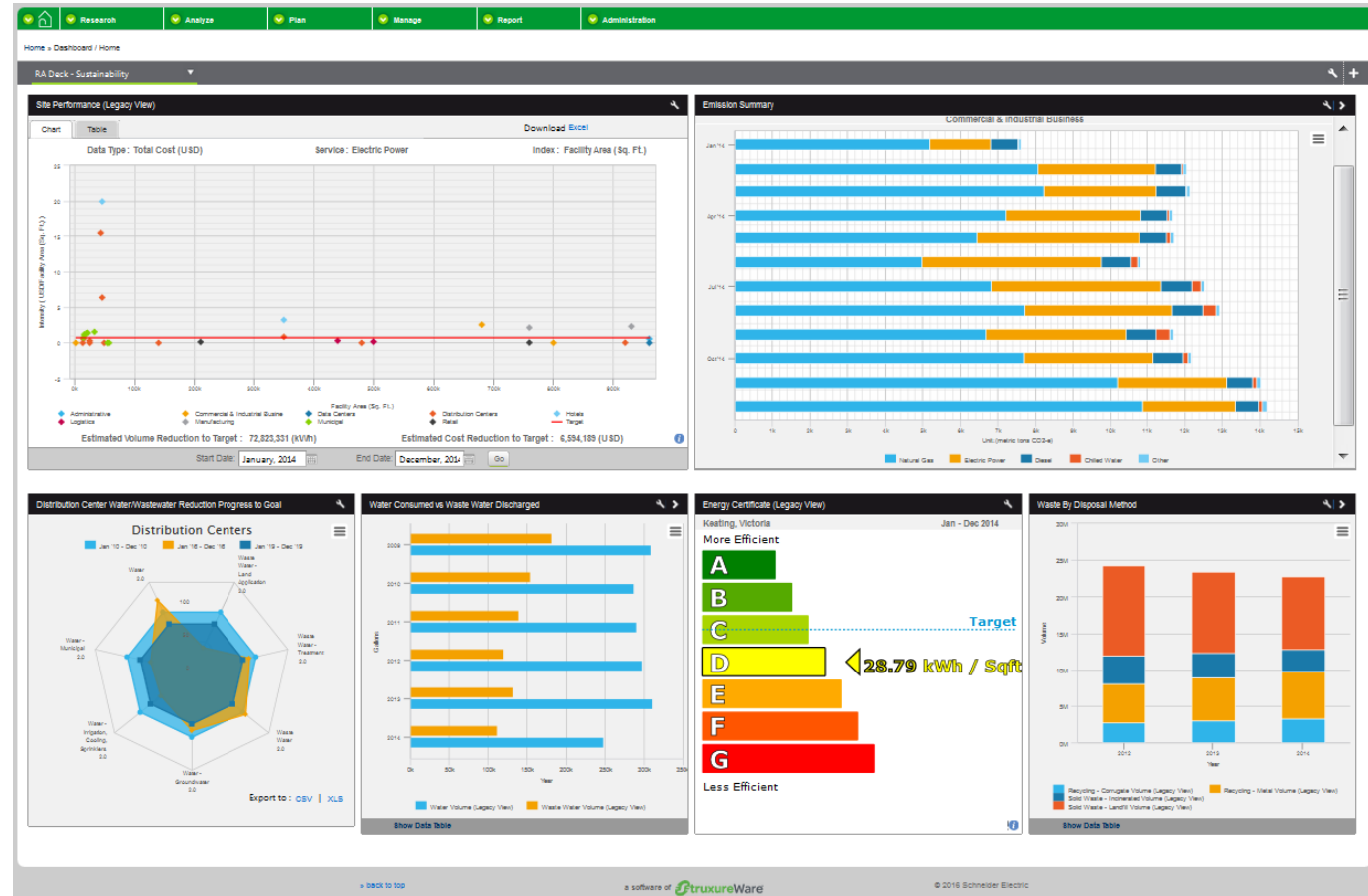
Quick access to sustainability metrics and project information

You need:

- One source for sustainability data
- Easy reporting and compliance,
- Identify efficiency opportunities, and calculate ROI of projects

Resource Advisor allows you to:

- Track and report enterprise sustainability data (Water, Energy, Waste, Supply Chain and more)
- Utilize a best-in-class carbon management reporting platform and fully maintained emissions library
- Rank & benchmark facilities to identify improvement opportunities
- Increase internal awareness through communication



Metrics like corporate emissions by pollutant

Life Is On **Schneider Electric** HOME DATA INSIGHTS REPORTING PROJECTS REFERENCE LIBRARY PERSPECTIVES DEMO **LOGIN** DEUTSCH

RESOURCE ADVISOR

Turn resource data into action

Envision a better energy and sustainability landscape. Using a single, cloud-based platform, start by collecting and aggregating cross-enterprise information. Sustainability metrics and supply data. Facility information. It's all there in the one place. Leverage managed services for invoicing, energy procurement, market monitoring, and more. Then analyze and share reports with both internal and external stakeholders for better collaboration. Finally, prioritize projects for improved performance and ongoing sustainability.

Resource Advisor: Energy and Sustainability...



Resource Advisor

Username:

Password:

Save my information

[Forgot your password?](#)

Password is case sensitive

[Click here to learn more about Resource Advisor](#)

© 2017 Schneider Electric **TruxureWare**

Life Is On

Schneider
Electric